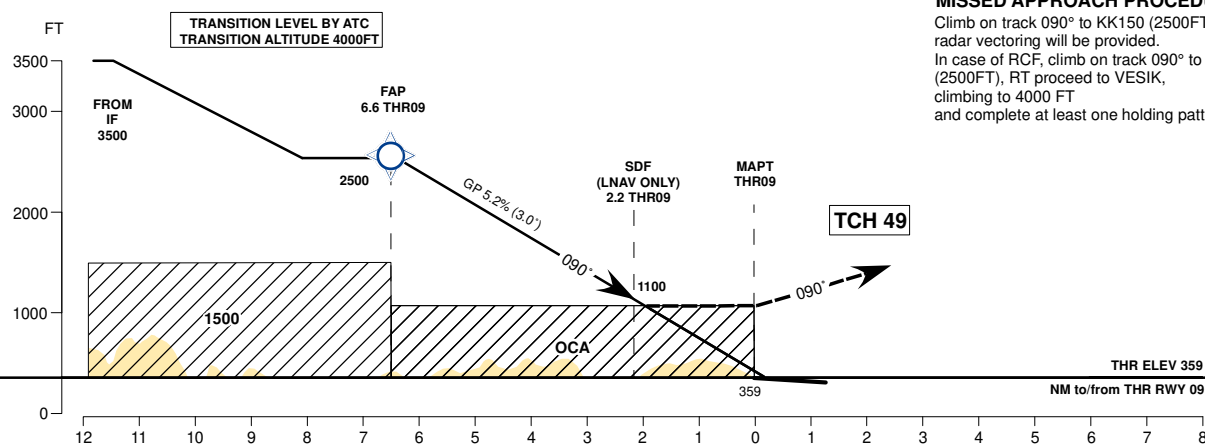
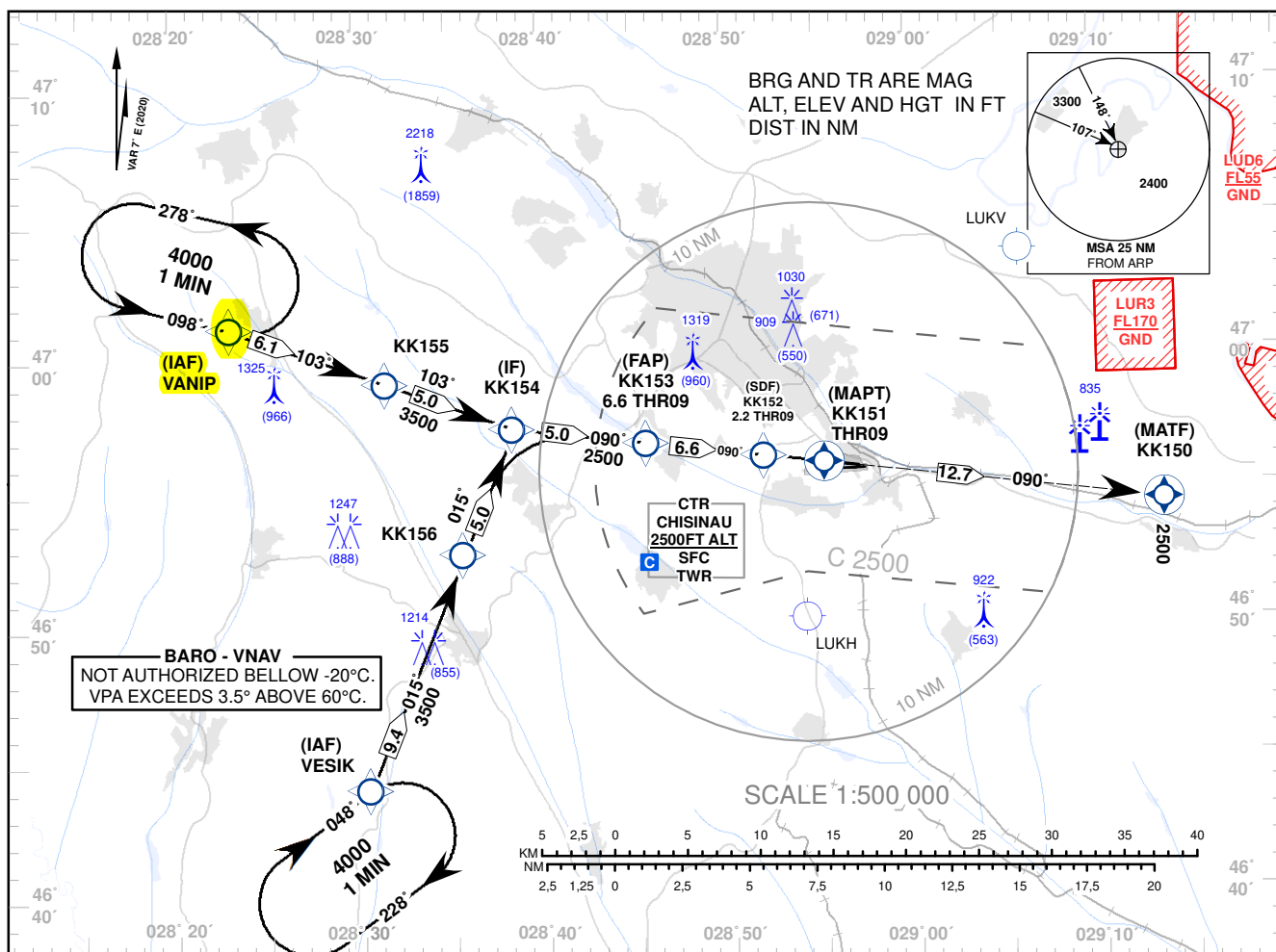


INSTRUMENT APPROACH CHART - ICAO

AD ELEV 399 FT
HEIGHTS RELATED TO
THR RWY 09 ELEV 359 FT

APP: 133.300 MHz
TWR: 118.100 MHz
ATIS: 125.225 MHz

CHISINAU/Intl (LUKK)
RNP RWY 09
(LNAV&LNAV/VNAV ONLY)



MISSED APPROACH PROCEDURE

Climb on track 090° to KK150 (2500FT), radar vectoring will be provided.
In case of RCF, climb on track 090° to KK150 (2500FT), RT proceed to VESIK, climbing to 4000 FT and complete at least one holding pattern.

OCA(OCH)	A	B	C	D
LNAV	840 (490)	840 (490)	840 (490)	840 (490)
LNAV/VNAV	745 (386)	745 (386)	745 (386)	745 (386)

DIST THR	7	6	5	4	3	2	1
ALTITUDE (Height)	2500 (2141)	2319 (1960)	2000 (1641)	1682 (1323)	1364 (1005)	1045 (686)	727 (368)

Timing not Authorised for Defining the MAPt.

Ground Speed	KT	80	100	120	140	160	180
DISTANCE FAP-MAPt 6.6NM	MIN:SEC	04:56	03:57	03:17	02:49	02:28	02:11
Rate of Descent (5.2%)	FT/MIN	425	531	637	743	849	955

Changes: CHISINAU CTR Changed. IF From 3500FT. Missed APCH Updated. "LUKV/National" Aerodrome Added.

**INSTRUMENT APPROACH
CHART - ICAO**
AD ELEV – 399FT
 HEIGHTS RELATED TO
 THR RWY 09 - ELEV 359FT

CHISINAU/Intl (LUKK)
RNP RWY09
(LNAV&LNAV/VNAV ONLY)
TABULAR DESCRIPTION

RNP RWY 09											
Serial Number	Path descriptor	Waypoint Identifier	Fly-over	Course °M (°T)	°MAG VAR	Distance (NM)	Turn Direction	Altitude (FT)	Speed limit (Kt)	°VPA/ TCH (FT)	Navigation Specification
010	IF	VANIP	-	-	+7.0	-	-	4000	-	-	RNP APCH
020	TF	KK155	-	103 (110.0)	+7.0	6.1	-	-	-	-	RNP APCH
030	TF	KK154	-	103 (110.1)	+7.0	5.0	-	+3500	-210	-	RNP APCH
010	IF	VESIK	-	-	+7.0	-	-	4000	-	-	RNP APCH
020	TF	KK156	-	015 (022.3)	+7.0	9.4	-	-	-	-	RNP APCH
030	TF	KK154	-	015 (022.4)	+7.0	5.0	-	+3500	-210	-	RNP APCH
010	IF	KK154	-	-	+7.0	-	-	+3500	-	-	RNP APCH
020	TF	KK153	-	090 (096.9)	+7.0	5.0	-	@2500	-	-	RNP APCH
030	TF	RW09/ KK151	Y	090 (097.0)	+7.0	6.6	-	@408	-	3.00/49	RNP APCH
040	CF	KK150	Y	090 (097.1)	+7.0	12.7	-	2500	-	-	RNP APCH

WAYPOINT LIST

RNP RWY 09		
Waypoint Identifier		
Coordinates		
IAF VANIP	47°01'11.0"N	028°23'13.0"E
IAF VESIK	46°44'03.0"N	028°30'27.0"E
KK155	46°59'05.3"N	028°31'35.5"E
KK156	46°52'44.6"N	028°35'39.8"E
KK154	46°57'21.8"N	028°38'26.7"E
KK153	46°56'45.8"N	028°45'41.6"E
KK152	46°56'13.7"N	028°52'03.9"E
RW09 / KK151	46°55'57.74"N	028°55'12.73"E
KK150	46°54'22.7"N	029°13'34.9"E